

# Finding Middle Q

## Sierra College's Public-Private Makerspace Partnership as a Strategy for Workforce Development

**Carol Pepper-Kittredge**, Statewide Project Manager, CCC Maker





# Changing Education

3 Campuses 3 Partners 3 Ecosystems

Presenters: Katie Lucero, Sebastian Romanet and Jonathan Schwartz

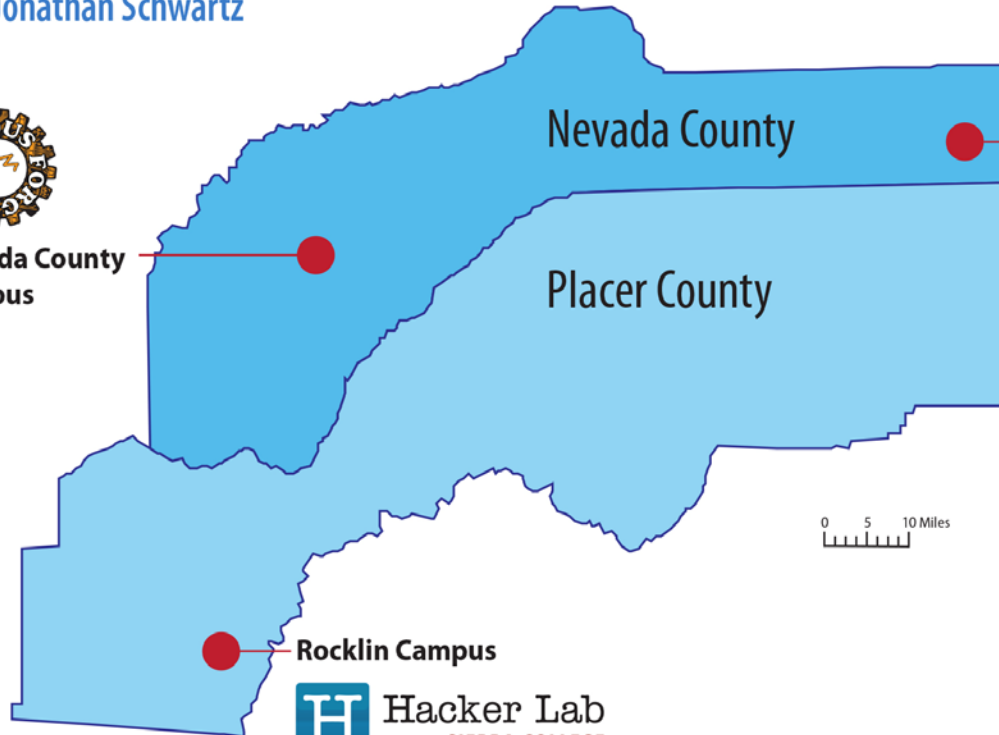


**SIERRA**  
COLLEGE

Makerspaces



Nevada County  
Campus



Tahoe-Truckee  
Campus

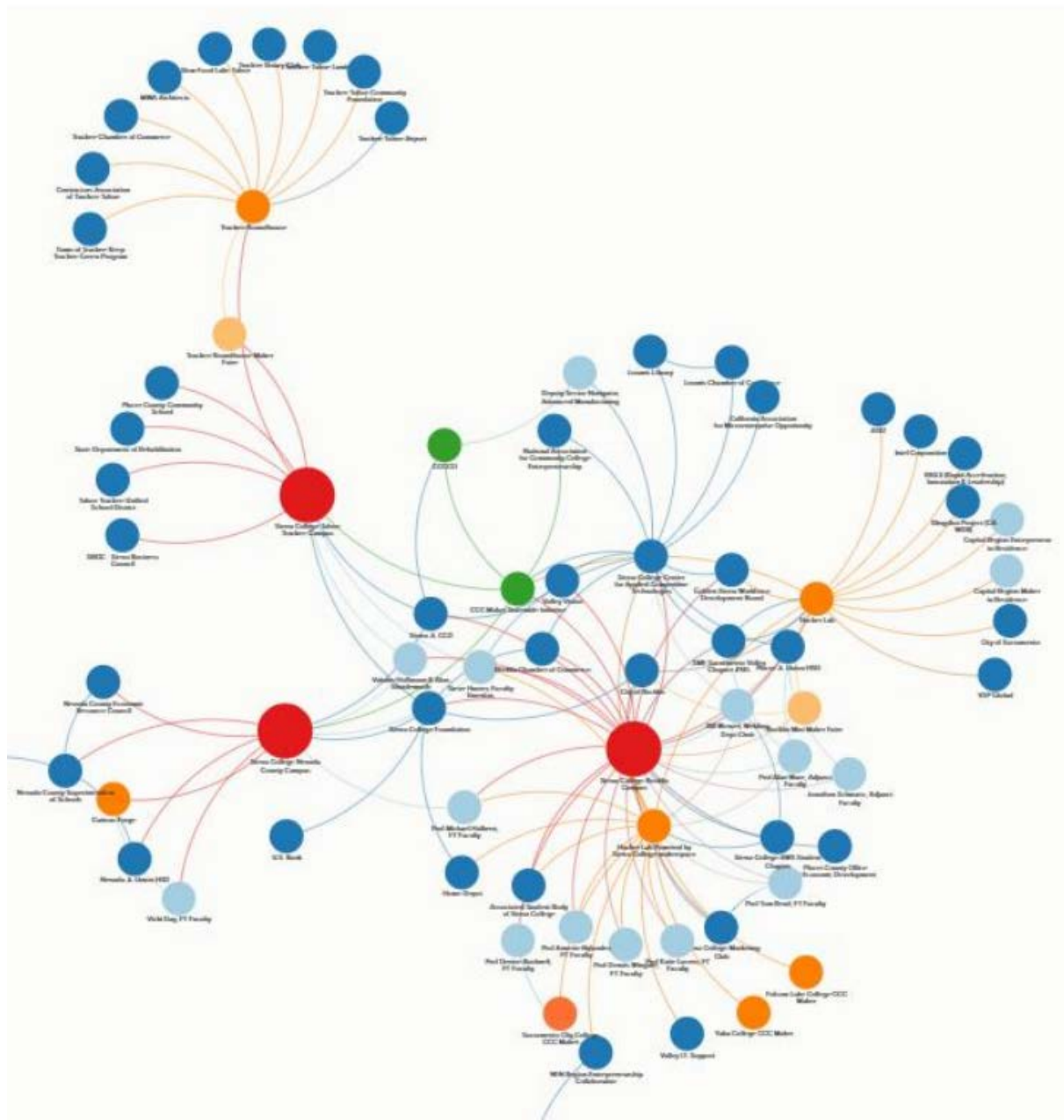
LAKE TAHOE



Hacker Lab  
POWERED BY SIERRA COLLEGE

SACRAMENTO

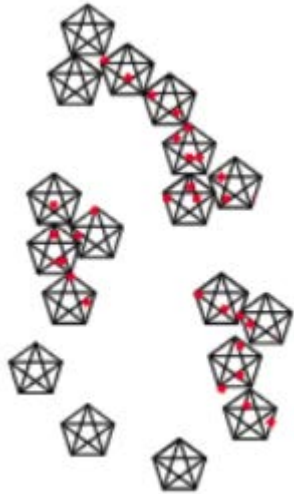
MADE FOR STUDENT SUCCESS



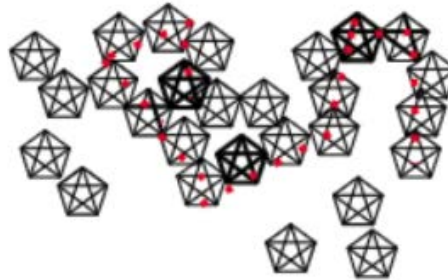
- Individual
- Organization
- CCC Maker Project
- CCC Chancellor's Office
- Other
- Campus Center
- Maker Event
- Makerspace
- Other

# Uzzi and Spiro – Collaboration and Creativity: The Small World Problem (2005)

Low Small World  
 Quotient: Limited  
 Network Members  
 and Connections



Middle Small World  
 Quotient: Diverse  
 Network of Locally  
 Clustered Members  
 and Connections



High Small World  
 Quotient: Highly  
 Integrated Network  
 of Members and  
 Established  
 Connections



Network Members

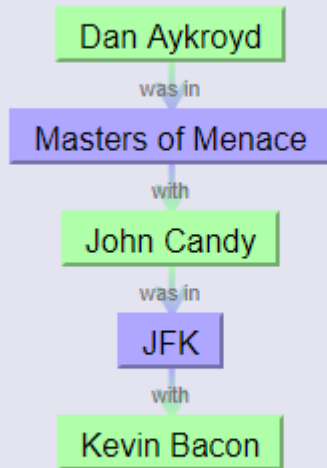


Network Connections

Oracleofbacon.org



Dan Aykroyd has a Bacon number of 2.



Kevin Bacon to Dan Aykroyd

Sierra College has an Adobe number of 1

Sierra College Business Prof. Dennis Wingate

*joined*

Hacker Lab powered by Sierra College

*Which connected him to member*

Mark Randall, VP of Creativity, Adobe

*Where they collaborated to create Kickbox.edu to accelerate*

Student Entrepreneurs

Sierra College has an MIT number of 2

Sierra College

*Hired as an instructor in Advanced Manufacturing*

Brian Roe

*Worked at Applied Minds, Applied Invention and the 10,000 Year Clock with*

Danny Hillis

*An alumnus and visiting professor at*

MIT



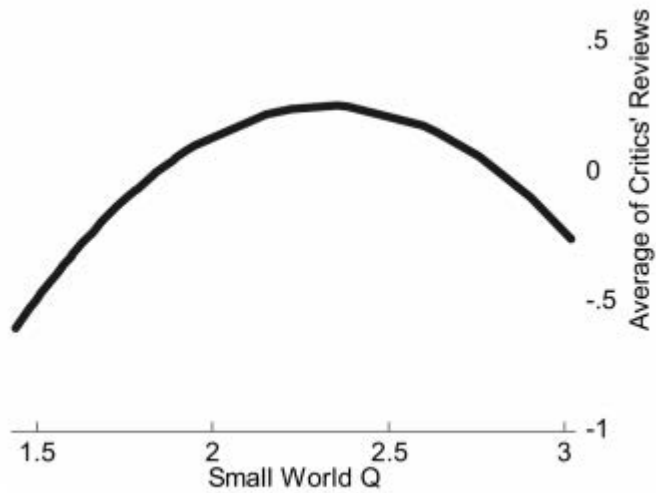
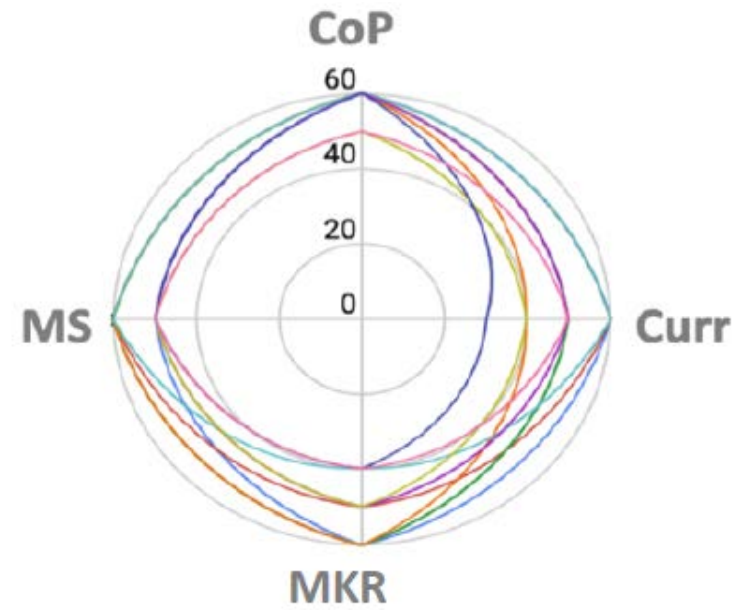
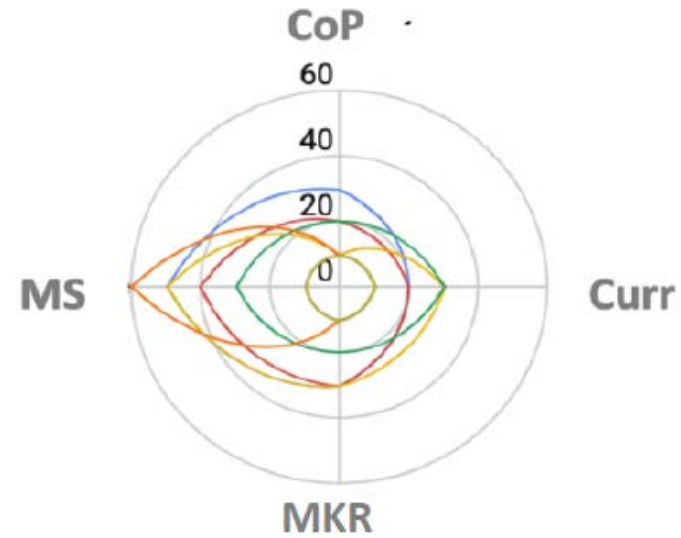


FIG. 5.—Artistic success of a show

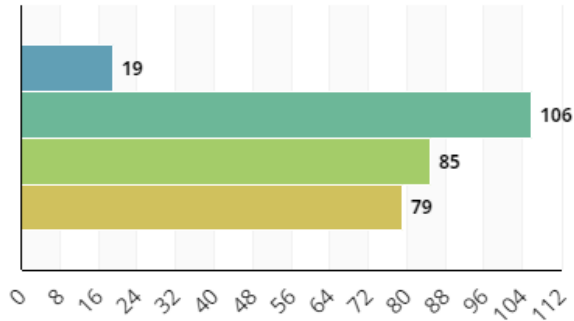
**Advanced Colleges (10)**



**Foundation-Level Colleges (8)**



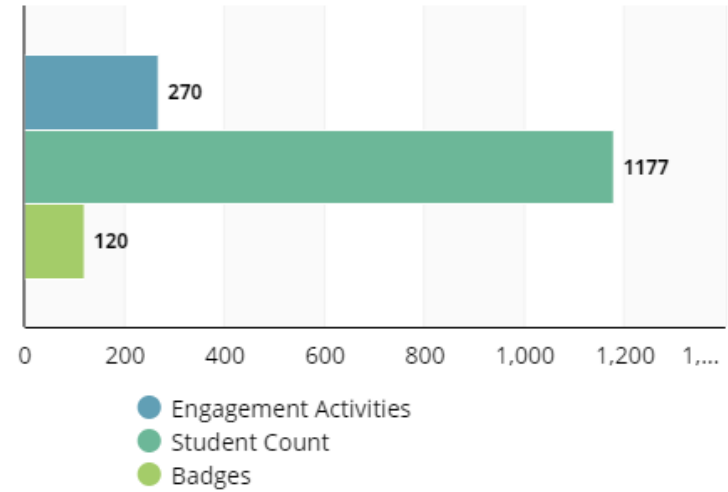
### Internships



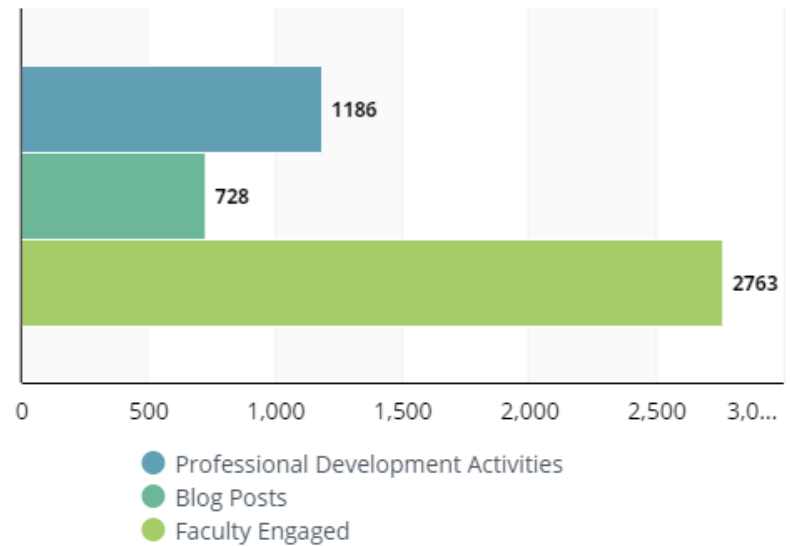
- Employers Recruited
- Students Recruited
- Students Pre-Placement Training
- Student Internships

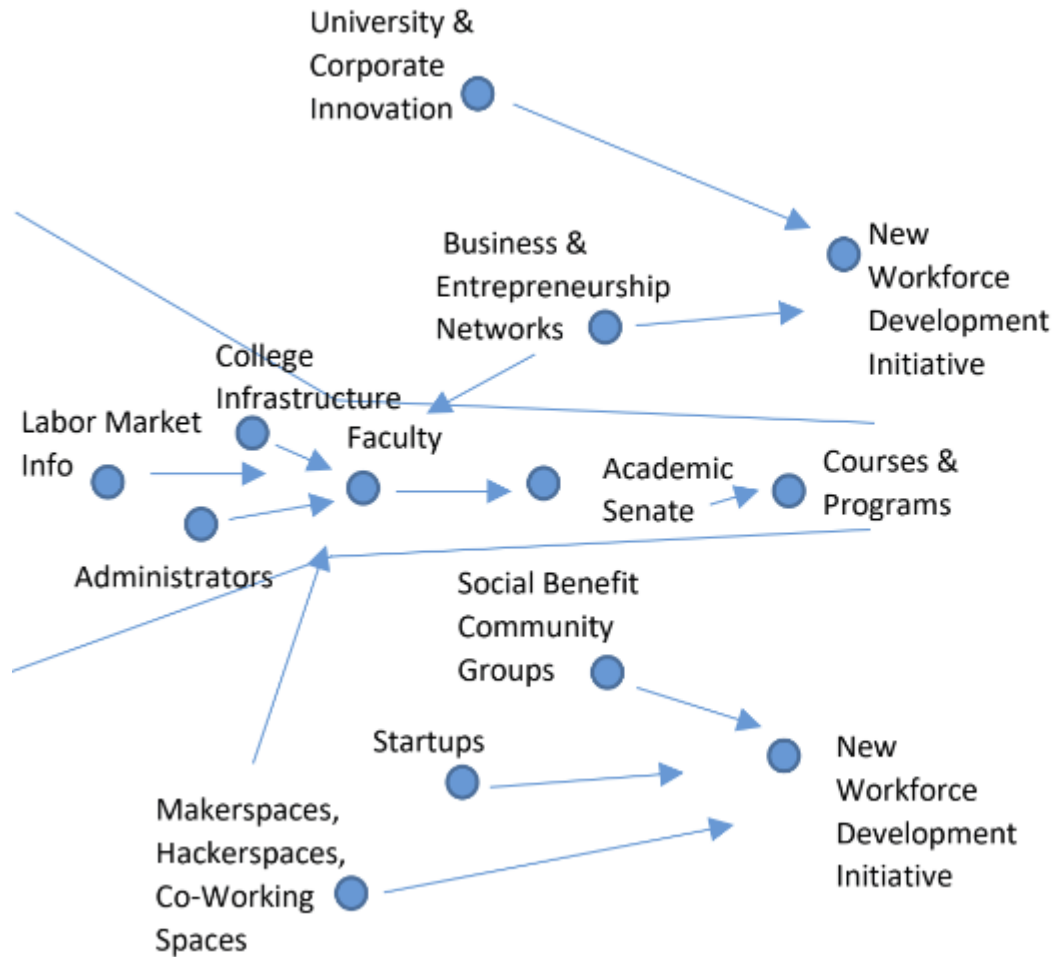


### Makerspace



### Community of Practice





**Outputs**

Academic programs that prepare students for current and future high wage and high skill workforce needs





**SIERRA**  
COLLEGE  
Makerspaces

<https://cccmaker.com/space/sierra-college-makerspaces/>

<https://sierracollegemakers.com/>

